

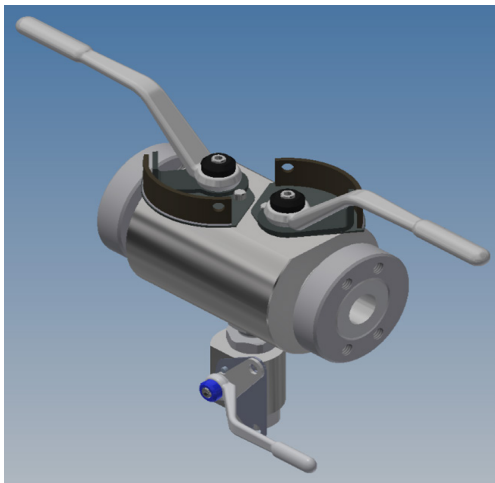
# BVFD DOUBLE BLOCK AND BLEED

DMIC's Double Block and Bleed valve combines the operation of three separate ball valves into one compact assembly. The assembly is made up of two in line isolation ball valves with a drain ball valve in between. This packaged design reduces the overall size, weight and installation costs as well as reduces the number of leakage points. The function of the valves allows you to block off pressure in either direction (either side) and drain off the pressure and liquid. This function can be utilized in systems for safety and/or for systems that are run off multiple sources allowing maintenance and upgrades without the need to shut down systems.

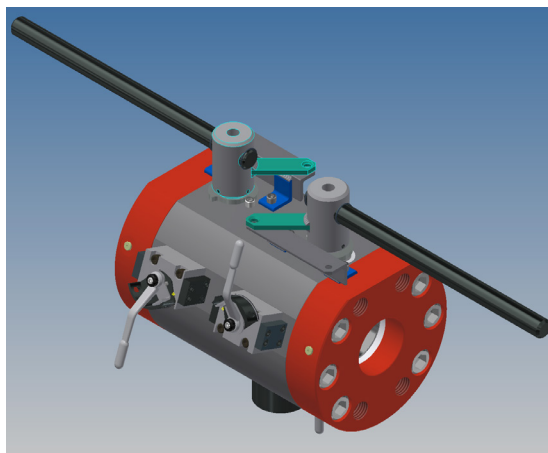
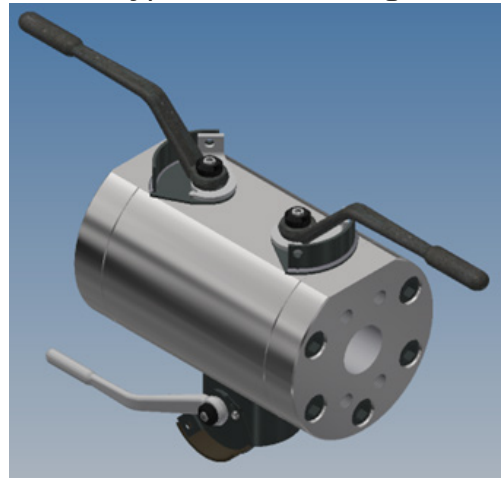


- Rated to 6000 psi. Carbon Steel or Stainless-Steel Construction.
- 3/4" - 4" Main Valve Standard size range. 1/4" - 1" bleed/drain valve sizes.
- Superior proven design using standard DMIC Valve parts and providing access spare parts available from our factory.
- Design features include full unrestricted bores, durability, and a large variety of connections available. Adapter flanges are also available.
- Standard Delrin ball seals & Buna-N elastomer seals. Other materials are available for full fluid compatibility range.
- Standard and High Torque Lockable Handles available.
- A complete array of DMIC engineered accessories including limit switches, proximity sensors etc. are available.
- Contact DMIC Sales for a dimensional drawing.
- For valves 3" and larger operating up to 6000 psi it is recommended to have PEV (Pressure Equalization Valves) installed integral to valve assembly.
- Design can be customized by DMIC to meet customer specifications.

Typical 1-1/4" and smaller



Typical 1-1/2" and larger



Typical 3" and larger with PEV



# BVFD DOUBLE BLOCK AND BLEED

## Ordering Codes Summary

See page 14 for  
accessory codes

Size	
Code	Port Size
07	3/4"
10	1"
12	1 1/4"*
15	1 1/2"*
20	2"*
25	2 1/2"*
30	3"*
40	4"*

**BVFD** **10** **\*\*** **02** **\*\*** **1** **1** **1** **1** **A** **Z** **Z** **D** **\*** **\***

O-Ring Seals	
Code	Description
1	Buna-N (Standard)
2	EPR
3	FKM
4	Teflon™
5	Chemraz™
6	Kalraz
7	Buna-3716 (low Temp)

Seals, Bushings, Washers	
Code	Description
1	Delrin™
2	PTFE Teflon™ (1500 PSI MAX)
4	High Temp PEEK
6	Delrin™ AF (low Friction)
7	Glass Reinforced Teflon™

Ball & Spindle Mat'l	
Code	Description
1	Carbon Steel
2	* Stainless Steel

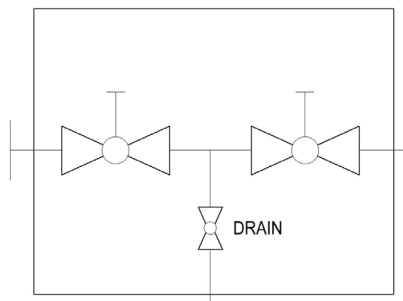
Connection Types	
Imperial Threads	
Code	Description
S	SAE ORB
N	NPT
Metric Threads	
B	BSPP
T	BSPT (Tapered Pipe)
ISO Threads	
IU	ISO6149
Flanged	
FM/FH	SAE 4-Bolt UNC
GM/GH	SAE 4-Bolt Metric
SM/SH	SAE Split Flange Head
DM/DH	DMIC Special Pattern

Bleed Port Size	
Code	Port Size
02	1/4"
03	3/8"
05	1/2"
07	3/4"
10	1"

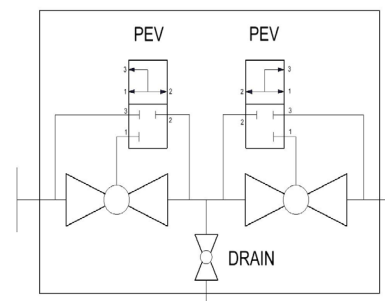
Body & End Connections	
Code	Description
1	Carbon Steel
2	Stainless Steel
4	Aluminum

\*Stainless Steel options for ball code may result in reduced bore.

See page 11 for flanged connection types



Standard Valve Schematic



Valve with PEV valves Schematic

**Note:** Changes from Standard Materials may result in changes to temperature and/or pressure rating.

*Due to our policy of continual product improvement, the specifications in this catalog may change without notice. When designing by spec, please request a certified print.*



www.dmic.com  
DMIC BALL VALVES CATALOG  
COPYRIGHT ©2025 DELAWARE MFG.

DBV-2504A  
PAGE 91

CALL TOLL FREE 1-800-248-3642  
IN CANADA 1-800-320-3642



ISO 9001 CERTIFIED

# BVFD DOUBLE BLOCK AND BLEED

BVFD	Port Size	PSI Rating	Dimensions (inches)							
			A	B	C	D	E	F	G	H
			Overall Length	Body Diameter	Bore Size	Main Handle Length	Overall Height	Bottom to Port Center	Center to Top	Width Between Shafts
Threaded Connections (6000 PSI)										
N S B T IU	¾"	6000 PSI	6.39	2.50	0.75	7.00	DEPENDENT ON BLEED VALVE SELECTION CONTACT FACTORY	3.72	2.60	
	1"		7.09	4.00	0.94	7.00		4.82	2.60	
	1¼"		7.74	4.44	1.25*	9.85		5.87	2.90	
	1½"		8.52	5.00	1.50*	9.85		5.87	3.39	
	2"		TBD	TBD	TBD*	TBD		TBD	TBD	
	3"		TBD	TBD	TBD*	TBD		TBD	TBD	
	4"		TBD	TBD	TBD*	TBD		TBD	TBD	

BVFD	Port Size	PSI Rating	Dimensions (inches)							
			A	B	C	D	E	F	G	H
			Overall Length	Body Diameter	Bore Size	Main Handle Length	Overall Height	Bottom to Port Center	Center to Top	Width Between Shafts
Flange Connections (6000 PSI)										
FH/GH DH  SAE C. 62, 4-Bolt Comp/ Std. & DMIC Connections	¾"	6000 PSI	7.37	2.50	0.75	7.00	DEPENDENT ON BLEED VALVE SELECTION CONTACT FACTORY	3.72	2.60	
	1"		7.87	4.00	0.94	7.00		4.82	2.60	
	1¼"		9.80	4.44	1.25*	9.85		5.87	2.90	
	1½"		8.52	5.00	1.50*	9.85		5.87	3.39	
	2"		TBD	TBD	TBD*	TBD		TBD	TBD	
	3"		TBD	TBD	TBD*	TBD		TBD	TBD	
	4"		TBD	TBD	TBD*	TBD		TBD	TBD	

BVFD	Port Size	PSI Rating	Dimensions (inches)							
			A	B	C	D	E	F	G	H
			Overall Length	Body Diameter	Bore Size	Main Handle Length	Overall Height	Bottom to Port Center	Center to Top	Width Between Shafts
Flange Connections										
FM/GM DM SAE C. 61, 4-Bolt Comp/ Std. & DMIC Connections	¾"	5000 PSI	7.37	2.50	0.75	7.00	DEPENDENT ON BLEED VALVE SELECTION CONTACT FACTORY	3.72	2.60	
	1"	5000 PSI	7.87	4.00	0.94	7.00		4.82	2.60	
	1¼"	4000 PSI	9.80	4.44	1.25*	9.85		5.87	2.90	
	1½"	3000 PSI	8.52	5.00	1.50*	9.85		5.87	3.39	
	2"	3000 PSI	TBD	TBD	TBD*	TBD		TBD	TBD	
	3"	2000 PSI	TBD	TBD	TBD*	TBD		TBD	TBD	
	4"	500 PSI	TBD	TBD	TBD*	TBD		TBD	TBD	

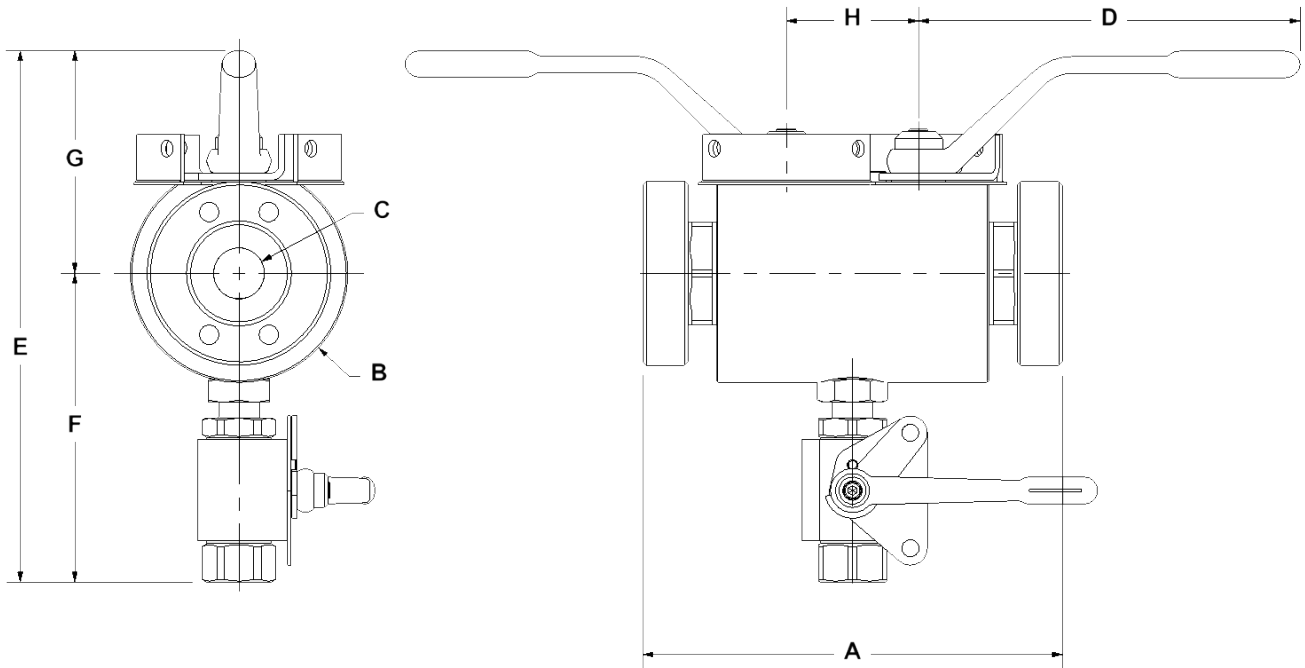
\*Stainless Steel options for ball code may result in reduced bore.

*Due to our policy of continual product improvement, the specifications in this catalog may change without notice. When designing by spec, please request a certified print.*

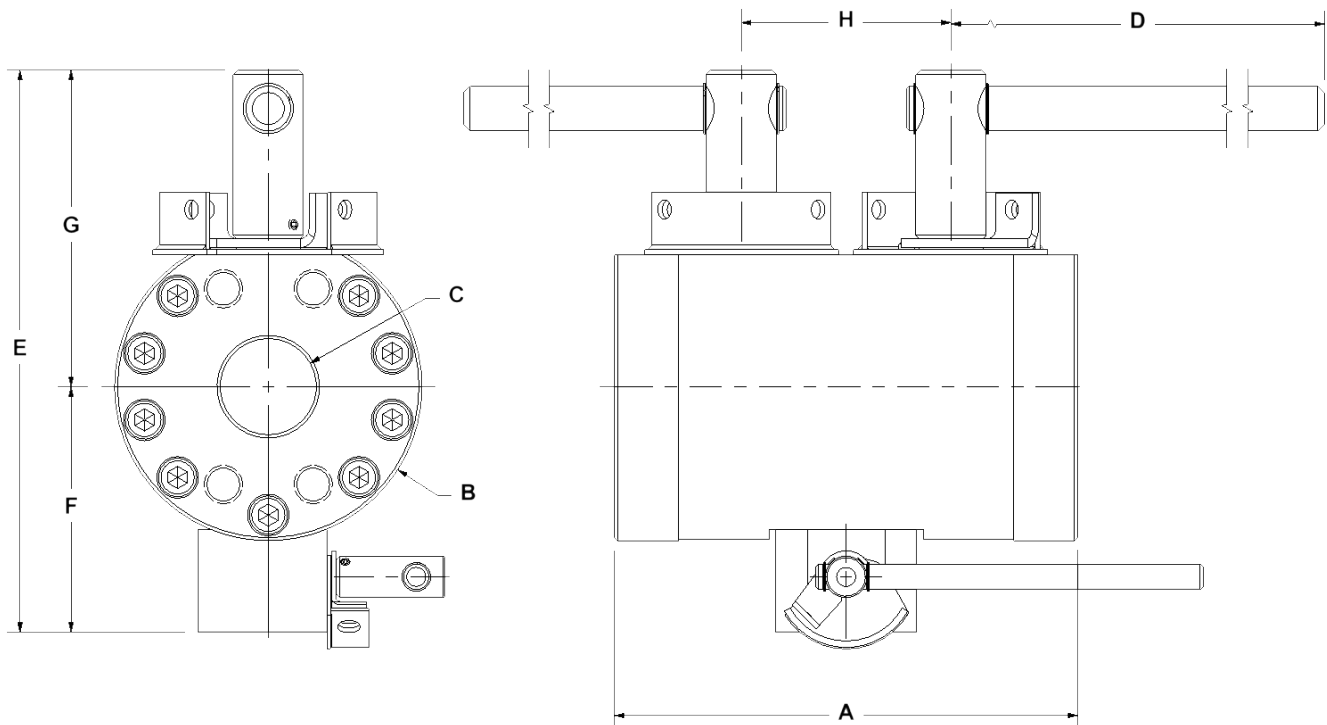


# BVFD DOUBLE BLOCK AND BLEED

## Dimension View



1.25" AND SMALLER WITH SCREW IN ENDS



1.50" AND LARGER WITH BOLT ON ENDS

**Due to our policy of continual product improvement, the specifications in this catalog may change without notice. When designing by spec, please request a certified print.**

